

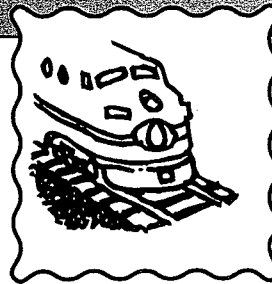
# Daily Word Problems

Name: \_\_\_\_\_

Day Four

## Trains

This chart shows the railroad distances from Albuquerque, New Mexico, to different cities in the United States.



Distance from Albuquerque, New Mexico

City	Distance in Miles
Amarillo, Texas	374
Baltimore, Maryland	2,102
Buffalo, New York	1,862
Cheyenne, Wyoming	583
Denver, Colorado	480
Fargo, North Dakota	1,605
Kansas City, Missouri	887
Los Angeles, California	889
Miami, Florida	2,185
Omaha, Nebraska	1,015
Salt Lake City, Utah	985
Tucson, Arizona	585

Use the chart to answer the following questions.

- Which city is the closest to Albuquerque? \_\_\_\_\_
- Which city is the farthest from Albuquerque? \_\_\_\_\_
- How many fewer miles are there when traveling from Albuquerque to Denver, than from Albuquerque to Miami? \_\_\_\_\_
- How many more miles are there when traveling from Albuquerque to Buffalo, than from Albuquerque to Tucson? \_\_\_\_\_



## 5-A-Day Language Review: Week 2

① Circle the **definition** that matches the word used in the sentence below.

**re•verse**

1. v. To go backward or in the direction one just came from
2. n. The back or rear part

One side of the worksheet has math problems and the reverse side has science questions.

② Circle the **prepositions** and cross out the **prepositional phrases**.

He ate all the candy from Halloween.

③ First identify if the following sentence is a **simile** or a **metaphor**: S M  
Then underline the two objects that are being compared to each other.

After swimming so far my arms felt like noodles.

④ Add at least two **adjectives** in the **correct order**.

We were startled when the \_\_\_\_\_ dog barked at us.

⑤ Which of the following could you **dangle**?

- a) keys                      b) a table                      c) a plate

① Use a **coordinating conjunction** to combine and create a **compound sentence**.

**for • and • nor • but • or • yet • so**

It didn't snow last week. It didn't snow this week.

---

---

② Rewrite with the **correct capitalization**.

during his class trip, reza went to the washington monument.

---

③ **reheating**       prefix: \_\_\_\_\_ base or root: \_\_\_\_\_ suffix: \_\_\_\_\_

④ Rewrite using a **possessive noun**.

the slippers of the children       \_\_\_\_\_

⑤ Use the meaning of the **roots/affixes** to define the word. Provide a **dictionary** definition.

**transport**       "trans" - across, over    "port" - bring, carry

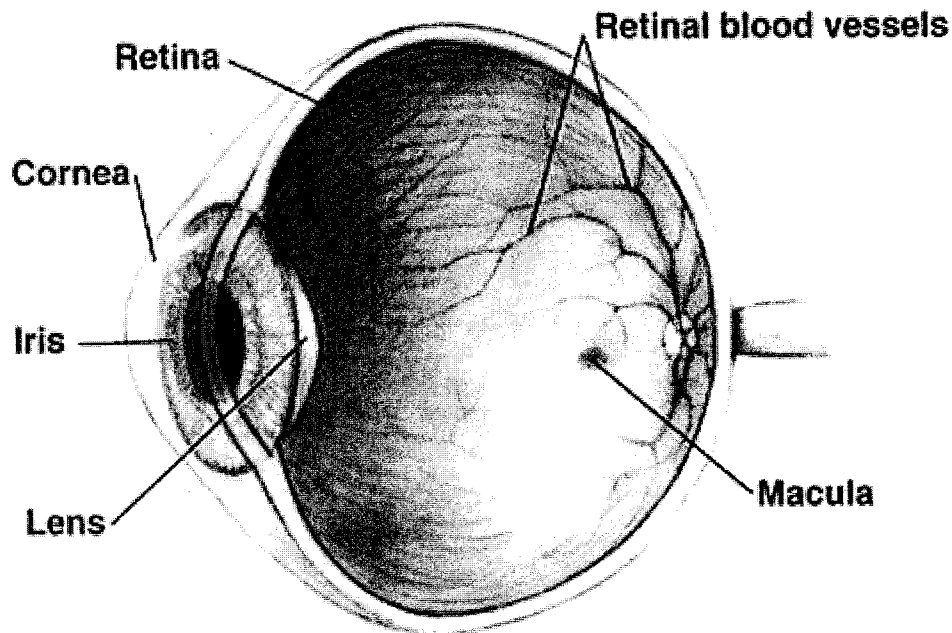
My Definition: \_\_\_\_\_

Dictionary Definition: \_\_\_\_\_

Don't



## Device May Help Blind People See



*parts of the human eye*

Inventors in Belgium have created a device that might enable thousands of blind people to see. The invention includes a small video camera mounted on eyeglasses.

Blindness can occur for many different reasons. One reason is damage to the retina, the membrane that lines the inner eyeball. The retina picks up visual messages in the form of light. Then it sends those messages to the brain through the optic nerve. If a person's retina is not working, messages are not sent to the brain.

The Belgian scientists created a tiny electronic device that takes over for a damaged retina. They implant the device inside the blind person's head, just behind the eye. The patient wears a pair of glasses with a little video camera mounted on them. The camera takes pictures and sends the images to the implant in the head. Then the implant electronically stimulates the optic nerve, sending the visual images to the brain. The scientists have tested the device in two patients. The results have been promising.

Name: \_\_\_\_\_ Date: \_\_\_\_\_

1. The main idea of this passage is

- A. scientists in Belgium are concerned about the visually impaired.
- B. scientists have tested their device on two patients.
- C. scientists invented a device to help blind people see.
- D. many people are blind from a damaged retina.

2. Which of the following does not necessarily support the main idea?

- A. The scientists are in Belgium.
- B. The device includes special glasses for the patient to wear.
- C. Scientists need to implant a device behind the patient's eye.
- D. The device sends messages to the optic nerve.

3. Before the device stimulates the optic nerve,

- A. a visual message goes to the brain.
- B. the person is aware of what he or she is seeing.
- C. a camera is mounted on glasses.
- D. all of the above.

4. The retina

- A. sends message to the brain.
- B. picks up visual information as light.
- C. determines what color eyes you have.
- D. protects the eye.

5. List a detail and explain how it supports the main idea.

---

---

---

Name: \_\_\_\_\_ Date: \_\_\_\_\_

1. What is a meaning of the word **device**?

- A. helpful information
- B. any clever maneuver
- C. an allocated amount

2. What is another meaning of the word **device**?

- A. one of a kind
- B. a human being
- C. an invention

1. What is a meaning of the word **stimulate**?

- A. to guide or direct
- B. to rouse to action
- C. flow off gradually

2. What is another meaning of the word **stimulate**?

- A. to fix the amount of a tax, fine, or damages
- B. to arouse an organism to functional activity
- C. change directions as if revolving on a pivot

1. What is a meaning of the word **enable**?

- A. render capable or able for some task
- B. persist for a specified period of time
- C. make by combining materials and parts

2. What is another meaning of the word **enable**?

- A. make mention of
- B. get temporarily
- C. to give power to